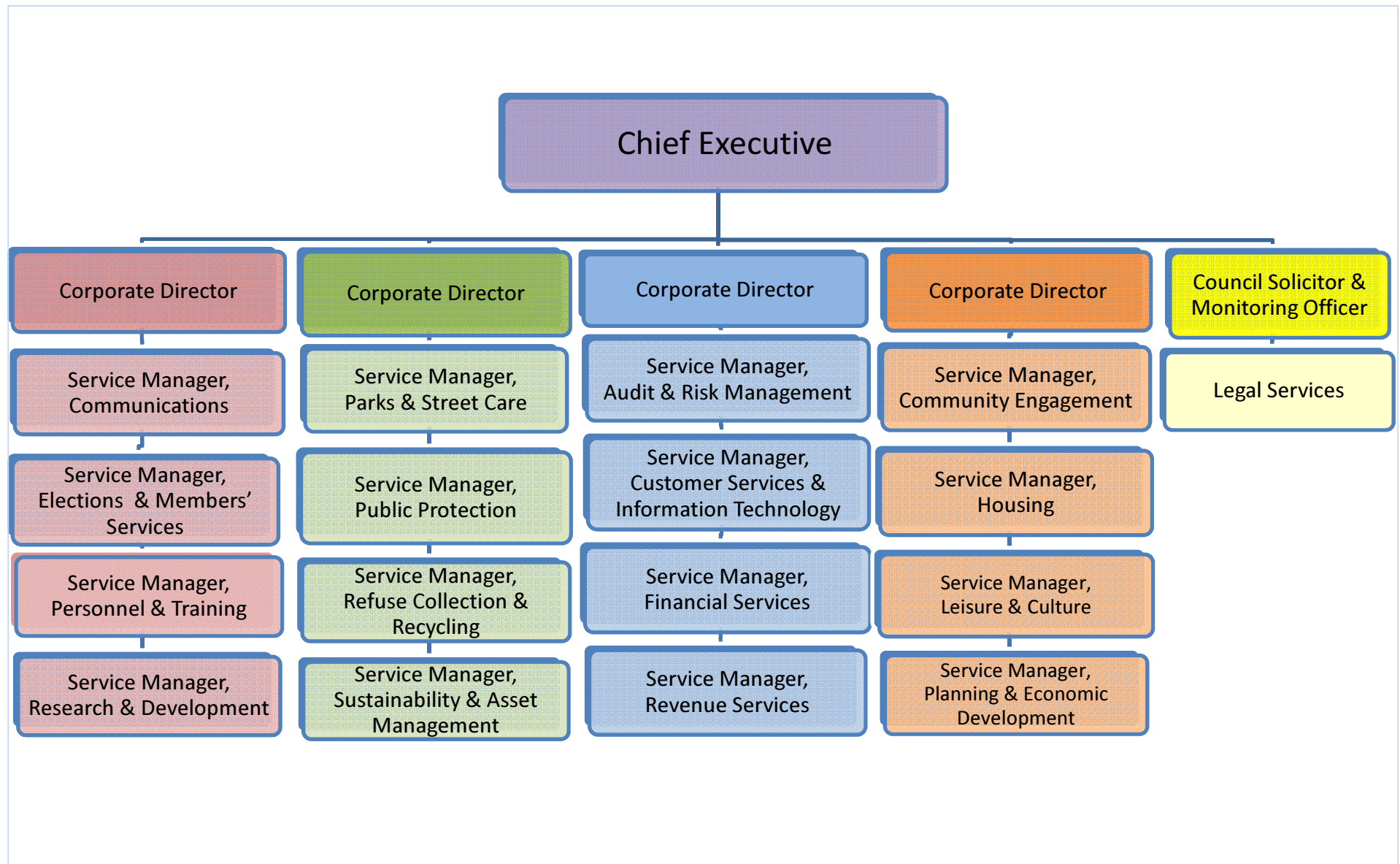


# REVISED DRAFT MANAGEMENT STRUCTURE OCTOBER 2011



CD1

**Corporate Director**

Service Manager,  
Communications

Service Manager,  
Elections & Members'  
Services

Service Manager,  
Personnel &  
Training

Service Manager,  
Research &  
Development

CD1 (i)

Service Manager,  
Communications

```
graph TD; A[Service Manager, Communications] --- B[Communications Assistant]; A --- C[Publications Officer]; A --- D[Web Development Officer];
```

Communications  
Assistant

Publications Officer

Web Development Officer

CD1 (ii)

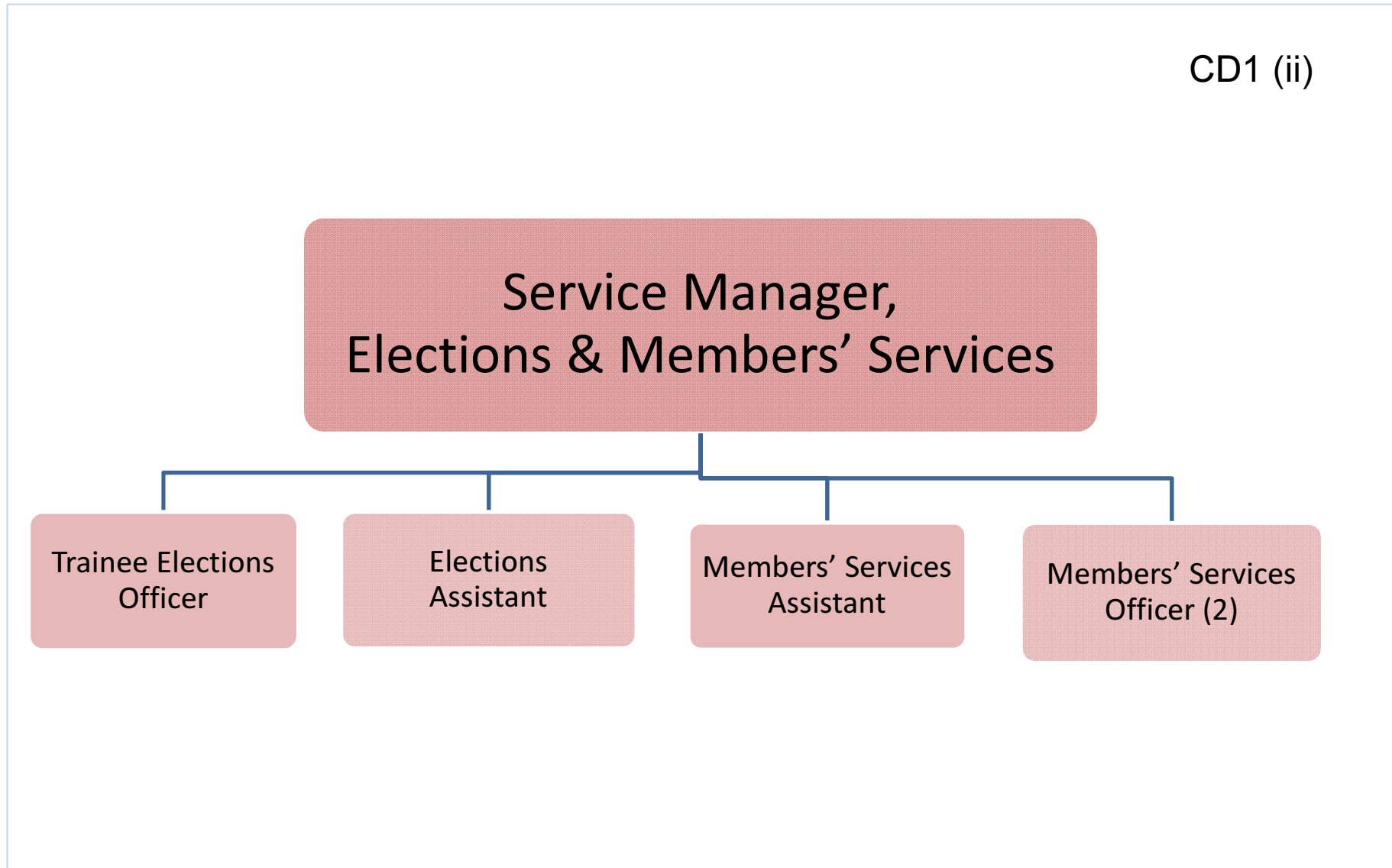
Service Manager,  
Elections & Members' Services

Trainee Elections  
Officer

Elections  
Assistant

Members' Services  
Assistant

Members' Services  
Officer (2)



CD1 (iii)

Service Manager,  
Personnel & Training

```
graph TD; A[Service Manager, Personnel & Training] --- B[Senior Personnel Officer]; A --- C[Training Officer]; A --- D[Personnel Advisor]; A --- E[Personnel Advisor];
```

Senior Personnel  
Officer

Training  
Officer

Personnel  
Advisor

Personnel  
Advisor

CD1 (iv)

Service Manager,  
Research & Development

```
graph TD; A[Service Manager, Research & Development] --> B[Performance Improvement Officer]; A --> C[Research and Development Officer];
```

Performance Improvement  
Officer

Research and Development  
Officer

# Corporate Director

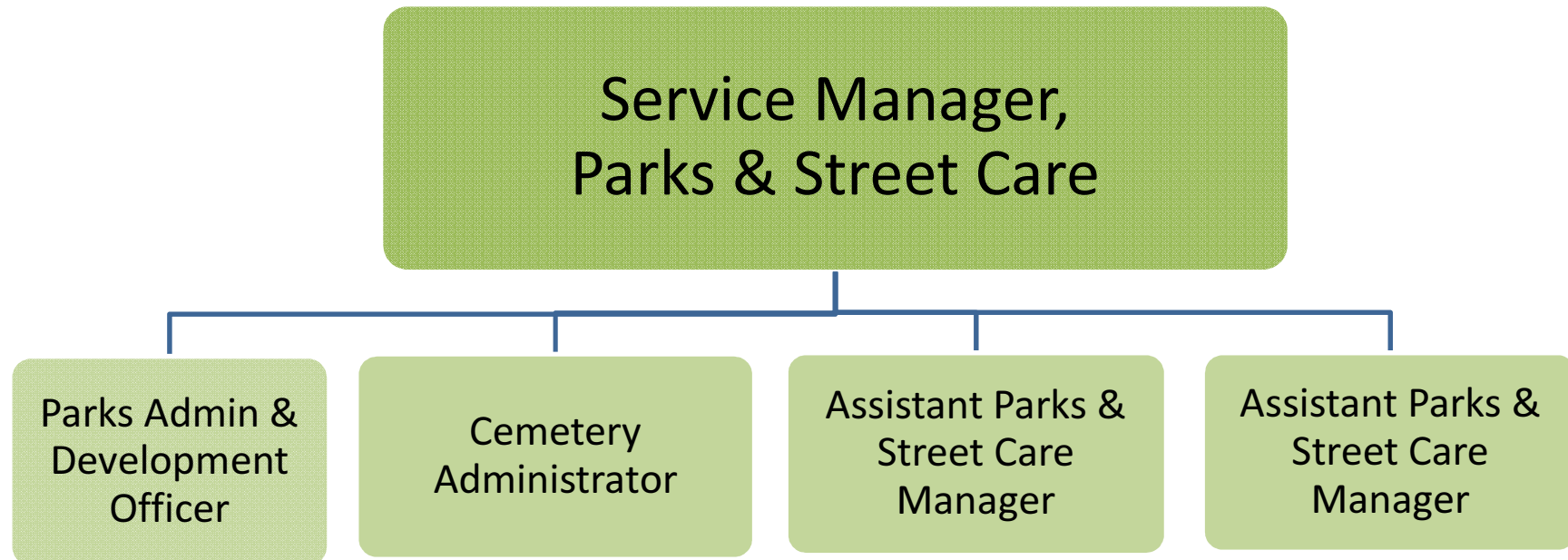
Service Manager,  
Parks & Street  
Care

Service Manager,  
Public Protection

Service Manager,  
Refuse Collection  
& Recycling

Service Manager,  
Sustainability &  
Asset  
Management

CD2 (i)





CD2 (ii)

Service Manager,  
Public Protection  
(Band 14)

Community  
Protection  
Manager

Environment  
and Housing  
Manager

Food, Health  
and Safety  
Manager  
(Band 10)

Community Safety  
Partnerships &  
Performance  
Manager  
(Band 9)

Licensing Officer

Community  
Safety  
Co-ordinator

CD2 (iii)

Service Manager,  
Refuse Collection &  
Recycling

```
graph TD; A[Service Manager, Refuse Collection & Recycling] --> B[Senior Waste Services Officer]; A --> C[Waste Operations Supervisor]; A --> D[Waste Development Officer];
```

Senior Waste  
Services Officer

Waste Operations  
Supervisor

Waste Development  
Officer

CD2 (iv)

Service Manager,  
Sustainability & Asset  
Management (Band 14)

Facilities  
Manager

Transport  
Services  
Manager

Sustainability  
Officer

Procurement  
Officer

Estates  
Officer

CD3

Corporate Director

```
graph TD; CD[Corporate Director] --- SM1[Service Manager, Audit & Risk Management]; CD --- SM2[Service Manager, Customer Services & Information Technology]; CD --- SM3[Service Manager, Financial Services]; CD --- SM4[Service Manager, Revenue Services];
```

Service Manager,  
Audit & Risk  
Management

Service Manager,  
Customer Services  
& Information  
Technology

Service Manager,  
Financial Services

Service  
Manager,  
Revenue  
Services

CD3 (i)

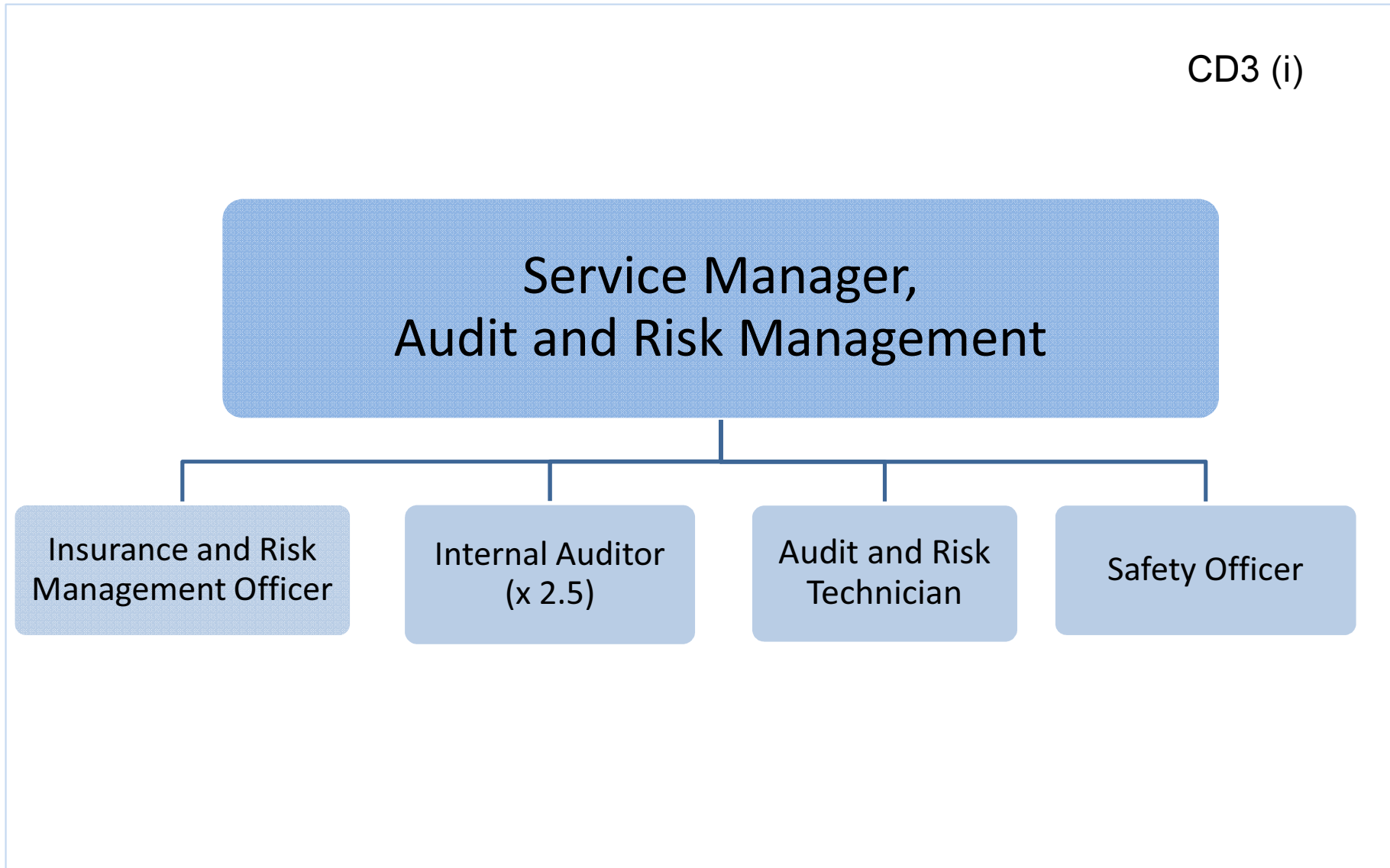
Service Manager,  
Audit and Risk Management

Insurance and Risk  
Management Officer

Internal Auditor  
(x 2.5)

Audit and Risk  
Technician

Safety Officer



CD3 (ii)

Service Manager,  
Customer Services &  
Information Technology  
(Band 14)

Business  
Transformation  
Manager

ICT Technical  
Manager

One Stop Shop  
Manager

Corporate  
Administration  
Officer

Service Manager,  
Financial Services

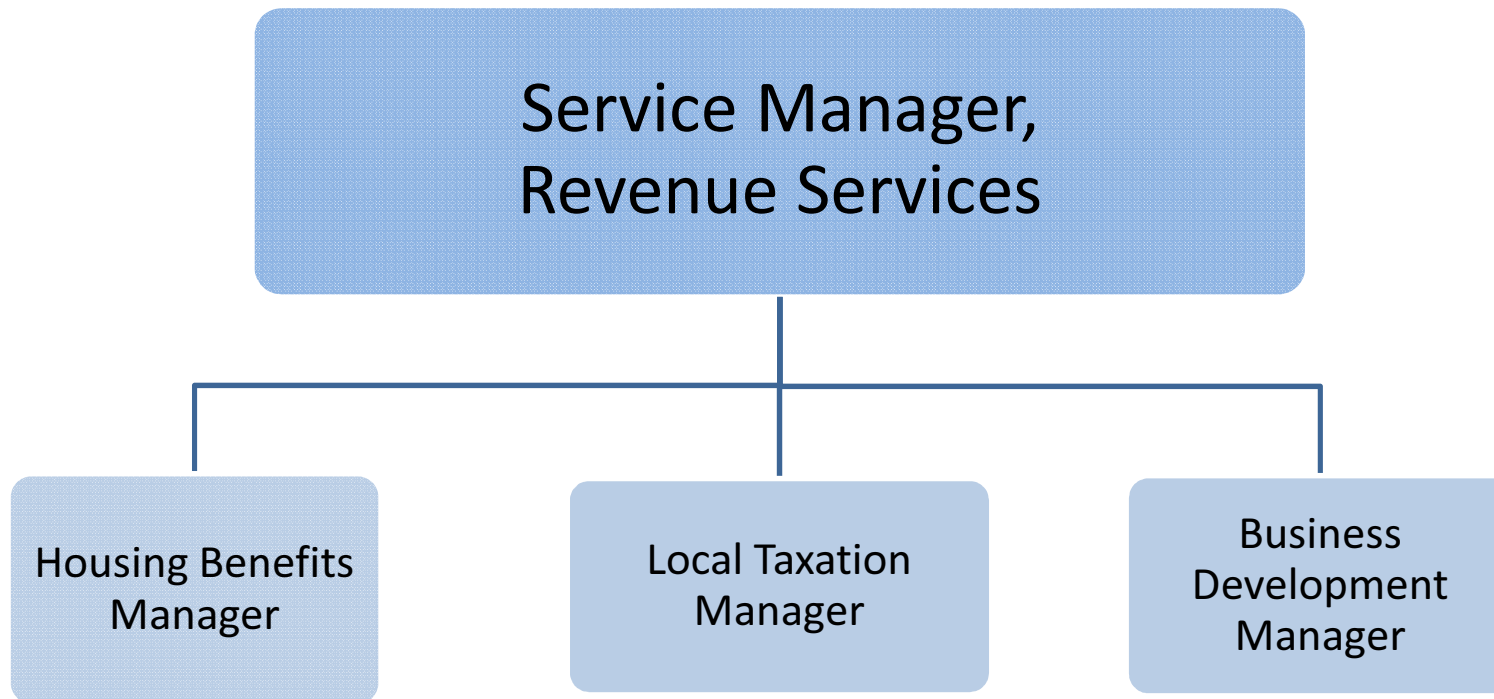
```
graph TD; A[Service Manager, Financial Services] --- B[Principal Accountant Services]; A --- C[Principal Accountant Corporate]; A --- D[Principal Accountant Services];
```

Principal Accountant  
(Services)

Principal Accountant  
(Corporate)

Principal Accountant  
(Services)

CD3 (iv)





CD4

Corporate Director

Service Manager,  
Community  
Engagement

Service Manager,  
Housing

Service Manager,  
Leisure & Culture

Service Manager,  
Planning &  
Economic  
Development

CD4 (i)

Service Manager,  
Community Engagement (Band 12)

```
graph TD; A[Service Manager, Community Engagement (Band 12)] --- B[Community Centres Manager]; A --- C[Events & Play Officer]; A --- D[Neighbourhood Co-ordinators];
```

Community Centres  
Manager

Events & Play Officer

Neighbourhood  
Co-ordinators

CD4 (ii)

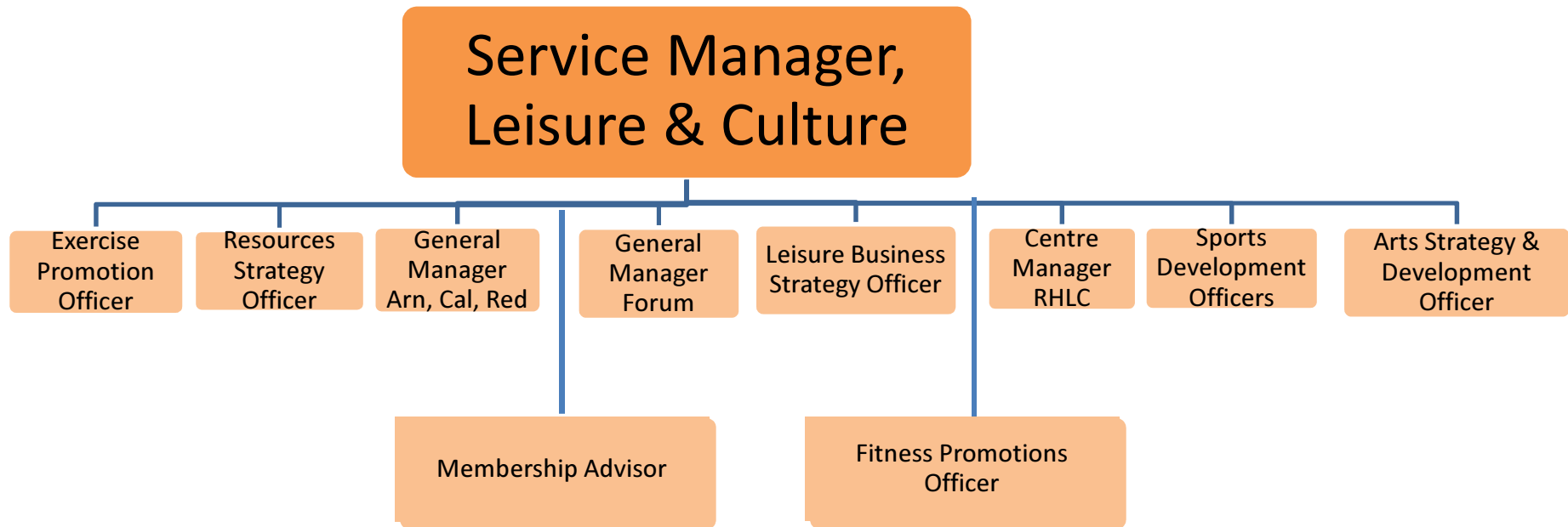
Service Manager,  
Housing (Band 13)

```
graph TD; A[Service Manager, Housing (Band 13)] --> B[Housing Needs Manager]; A --> C[Housing Strategy and Development Officer];
```

Housing Needs Manager

Housing Strategy and  
Development Officer

CD4 (iii)



CD4 (iv)

Service Manager,  
Planning & Economic  
Development  
(Band 14)

```
graph TD; A["Service Manager, Planning & Economic Development (Band 14)"] --- B["Development Management & Building Control Manager (Band 12)"]; A --- C["Planning Policy Manager"]; A --- D["Economic Development Officer"];
```

Development  
Management &  
Building Control  
Manager  
(Band 12)

Planning Policy  
Manager

Economic  
Development Officer

**Council Solicitor &  
Monitoring Officer  
[F/T]**

